

Dad Housing

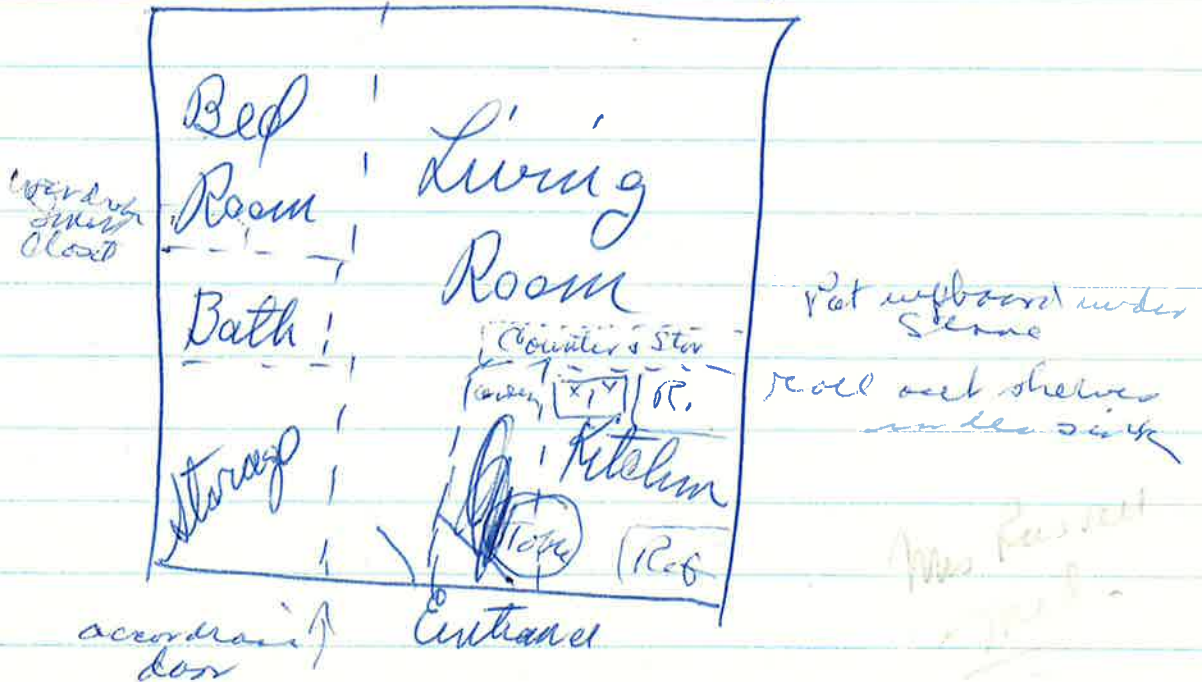
Marie Russell Medford

40. Celeste lovely slopes ^{Laundry Ref}
 Apts Carpet in L.R. about 13x15
 Bed " " 11x12

K. fair size about 6 or 8 ft comb Ref + frige
 Built in oven + stove large storage

She gave extensive reports on housing from lower cal to here.
 Said Celeste was the best. (She pays \$145 a
 mo in a Calif housing project)

about 400 & 500 sq ft. floor space.



- ① Cross Bay got NAA help the same year -
it applies - Lucille Russell came to AB
and gave a talk to help stir and organize.
Direct Mike apply pressure. Sincerely
speak with one voice.

Mrs Russell med. How do the P & R get interested
in Or (Calif is way ahead)

- ③ Albany (had good accident) by getting city
council informed.

I think this meeting is too big - too many questions - too wide spread - to reach the governor

Washington Co. under Hugh Rosenberg set up a seminar and invited representatives from all Co agencies.

Welfare

Health

Education - School supt, Commissioner,

Sheriff

Get Seminars set up in all counties.

How do you tie into

This meeting is too big -
Too many questions - too many
problems too wide spread -

"Best resolved that this SO body put on
record the great concern of low income
supers under tax.

Low income O.E.O.

100% off
55 to 65

Do tax assessor ask him &
Check The Title and
include it in tax

Defined as homeless tax exemption.

Hugh Rosenberg, Executive Director
of Washington County, and my boss,

Amer Ass Pet Persons

~~We are totally involved in question~~

Insurance in by June 5 -

Our association in Wash D.C.

1346 Connecticut N.W.

Wash D.C.

20036