

Inside this issue:

**OHDC Program Overview** 1

**Farmworker Forums** 1

**OHDC Mission Statement** 2

**OHDC Service Strategy** 3

**Contact Information** 4

**Pacific Northwest Farmworker Summit** 4

**Funding Sources** 4

## OHDC PROGRAMS

### Farmworker Community Services Block Grant

- Provides core funding to support network of all OHDC farmworker programs
- Includes information, referral, direct services, life skills workshops, and emergency assistance for low-income farmworkers



### National Farmworker Jobs Program

- Professional assistance to strengthen the ability of farmworkers to increase and achieve self sufficiency through employment and training services

### HOME-Tenant Based Assistance (TBA), and Low-Income Rental Housing Assistance (LIHRF)

- Rental assistance in six-month to one-year terms, case management, and life skills workshops to qualified low-income tenants

*(Continued on page 2)*

## FARMWORKER SERVICES INPUT: ELEVEN FORUMS IN OREGON

“Ask those who know” is OHDC’s approach to planning. Farmworkers and those who provide services for them were invited to eleven meetings around Oregon during February and March. These meetings were part of OHDC’s biennial planning process that relies heavily on farmworkers’ experience in seeking services such as employment, health care, housing, education, and emergency assistance.

These meetings revealed that language skills are the most essential to farmworkers obtaining stable employment. Sadly, ESL classes are at risk as community colleges struggle with shrinking budgets. OHDC staff are working to partner with other agencies to make as much ESL and basic skill education available as possible in each of the communities we serve.



Whether picking tree fruits and nuts, or harvesting row crops, farmworkers in Oregon make an impact on our daily lives.

**OHDC'S  
MISSION  
STATEMENT**

To promote economic and social advancement of farmworkers, Hispanics and disadvantaged individuals through the provision of education, training, advocacy and services that enhance self-sufficiency.

**PROGRAMS THAT MAKE A DIFFERENCE**

Continuum of Care

- Supportive Housing Program (SHP) component made available to homeless participants in Malheur County
- Rental assistance, case management, supportive services, information and referral, and facilitated access to community resources

Homeless and Rental Assistance Programs (HARA)

- Emergency Housing Account (EHA)
- State Homeless Assistance (SHAP)
- Housing Stabilization (HSP)

Federal Emergency Management Agency (FEMA)

- Emergency rental & utility assistance to prevent eviction or utility shut-off

Weatherization

- Low-income renters and home owners benefit from lower utility bills if their homes are weatherized
- Energy-use reduction education provided

Goodwill Voucher Program

- Coordination with Goodwill to purchase clothing and household goods for low-income Hispanics and farmworkers in need

Farmworker Youth Opportunity Program

- Eligible youth get a second chance through our helping hands to stay in school or complete their GED
- Work experience, leadership, and exposure to post-secondary education is provided

Hispanic Access Center/Centro Hispano

- Metro area supportive assistance for Hispanic population
- Domestic and Sexual Violence Intervention Services

Washington County Youth Center

- Provides out-of-school educational and skill building resources for youth
- The Young Parent Program provides case management and education for first time parents



Grapes in this fine wine are picked by Oregon farmworkers. 8,800 acres of grapes for wine were harvested in Oregon in 2001. Oregon Agricultural Statistics Service, [www.nass.usda.gov/or/annsum2002.htm](http://www.nass.usda.gov/or/annsum2002.htm)

OHDC's Organizational Structure allows multiple programs to coexist in an efficient manner. For all Oregon communities we work in, programs are tailored to fit the specific needs of those customers.

## OHDC'S SERVICE STRATEGY

### Basic Needs

Our organization provides a variety of fundamental supports to farmworkers, low-income persons and their families. The services in this category are intended only to carry a person through a short and difficult time. Basic needs may include emergency housing, money for gas or food, and assistance with utility bills.

Our urban Hispanic domestic violence program provides crisis intervention services. Each of these programs work towards stabilizing the individuals and families so that further opportunities, such as our human development programs, may be more easily accessed.

### Human Development

OHDC is about more than just stabilizing a crisis. We provide developmental services to improve the economic well-being of our customers. We help our customers identify what they most want to learn, achieve, retain, or acquire to reach their potential. In this way, OHDC becomes a catalyst for more significant and growth for clients that provides them with greater long-term benefits.

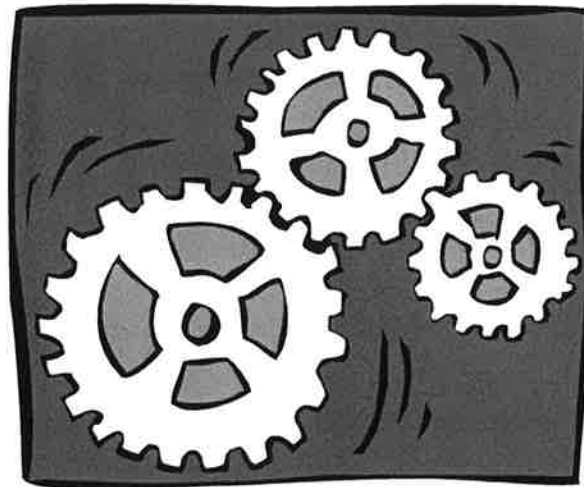
Our National Farmworker Jobs Program, Farmworker Youth Opportunity Program and Washington County Youth Center each provide skill building, work experience, and career exploration for our customers. These programs bring new possibilities to individuals that have language, education, or other challenges.

### System Design

The third level of OHDC's success is the desire to build partnerships and creative group strategies to efficiently help those we serve. The end product of each activity may be different, but the goal is the same: to provide the best level of services for those who utilize our services. For instance, our Farmworker Youth Opportunity Program was developed and implemented with cooperation of Migrant Education, local Educational Service Districts, and other interested agencies.

Our Farmworker Summit is designed to provide the latest updates on issues affecting agricultural laborers across the tri-state area. Other programs include the Agencias Latinas de Multnomah para Apoyo Social (ALMAS), Domestic Violence Best Practices Program, and our continued participation in, and support of, the Workforce Investment Act One-Stop System.

OHDC becomes a catalyst for more significant and growth for clients that provides them with greater long-term benefits



# PACIFIC NORTHWEST FARMWORKER SUMMIT

OHDC is the host of the annual Pacific Northwest Farmworker Summit. Designed for Farmworker, One-Stop, Youth and Adult service providers, the summit brings valuable information regarding the agricultural industry in Oregon, Washington, and Idaho.

The topics for this year's Summit included:

- State Employment Service & WIA 167 Director's Roundtable
- Mexican Government Initiatives & Services for Farmworkers
- Agricultural Industry Trends & Employment Implications
- ESL/ABE/Skill Development
- Maintaining Attention to Farmworker Customers in the Workforce Development System

Keynote speakers such as Armando Quiroz, Regional Administrator for U.S. Department of Labor-ETA, Region 6, and Candido Morales Director of the Institute for Mexicans Abroad, help provide a wide array of knowledge and expertise on the issues facing farmworkers across the region. Local growers and service providers relate direct experience working with agricultural workers.

Be sure to check our website, [www.ohdc.org](http://www.ohdc.org), in winter to learn how to register for our next Pacific Northwest Farmworker Summit in Spring 2004.



## OHDC OFFICES

### WASHINGTON COUNTY

#### Hillsboro Service Office

233 SE Washington

Phone: (503) 640-5496

Hillsboro, Oregon 97123-4023

Fax: (503) 844-6585

#### Youth Center - Hillsboro

233 SE Washington

Phone: (503) 640-6349

Hillsboro, Oregon, 97123-4023

Fax: (503) 844-6585

#### Youth Center - Tigard

12345 SW Main St

Phone: (503) 670-7574

Tigard, OR 97223

Fax: (503) 639-6302

### YAMHILL/POLK COUNTIES

#### Farmworker Youth Office

1697 Monmouth St., Suite 1

Phone: (503) 475-3713

Independence, OR 97351

Fax: (503) 838-6052

### MARION COUNTY

#### Woodburn Service Office

476 N. 2nd Street

Phone: (503) 982-5100

Woodburn, Oregon 97071-3938

Fax: (503) 982-4837

### KLAMATH/LAKE COUNTIES

#### Klamath Falls Service Office

829 Klamath Avenue

Phone: (541) 883-7186

Klamath Falls, Oregon 97601

Fax: (541) 883-8053

#### Merrill Service Office

365 W Front St

Phone: (541) 798-5892

Merrill, Oregon 97633

Fax: (541) 798-5881

### MALHEUR COUNTY

#### Ontario Service Office

2880 S.W. 4th Avenue, Suite 8

Phone: (541) 881-1491

Ontario, Oregon 97914-1874

Fax: (541) 881-8592

### MULTNOMAH COUNTY

#### Central Office (Admin.)

9620 S.W. Barbur Blvd., Ste 110

Phone: (503) 245-2600

Portland, Oregon 97219-6095

Fax: (503) 245-9602

#### Hispanic Access Center

1715 E. Burnside

Phone: (503) 236-9670

Portland, Oregon 97214-1531

Fax: (503) 234-9074

#### Gresham Service Office

18448 SE Pine

Phone: (503) 666-3009

Portland, Oregon 97233

Fax: (503) 492-8463

## OHDC FUNDING SOURCES

Children's Trust Fund of Oregon  
Federal Emergency Management Agency  
Klamath/Lake Community Action Services  
La Cooperativa Campesina de California  
Malheur Council on Aging  
Multnomah County

Oregon Housing and Community Services  
Department  
Oregon Department of Human Services  
Oregon Department of Justice  
Oregon Department of State Police  
Portland Impact

Raphael House of Portland  
Southern Oregon Goodwill Industries  
US Department of Labor  
Washington County  
worksystems, inc.