



**WASHINGTON COUNTY
COMMUNITY ACTION
ORGANIZATION**

**MULTI-FAMILY
ENERGY
CONSERVATION
PROGRAM**





SAVE ENERGY! SAVE MONEY!



- ▲ INCREASE PROPERTY VALUES!
- ▲ EARN TAX CREDITS!
- ▲ REDUCE VACANCY RATES!
- ▲ IMPROVE RENTER COMFORT!
- ▲ LOWER TENANT TURNOVER!

WASHINGTON COUNTY COMMUNITY ACTION ORGANIZATION (WCCAO) MULTI-FAMILY ENERGY CONSERVATION PROGRAM

WCCAO offers a comprehensive weatherization assistance program for owners and managers of multi-family buildings in Washington County. To qualify, at least 50% of your units must be occupied by low income tenants. (Please see note on back of this brochure if your project does not meet this requirement.)

WHAT WE CAN DO FOR YOU:

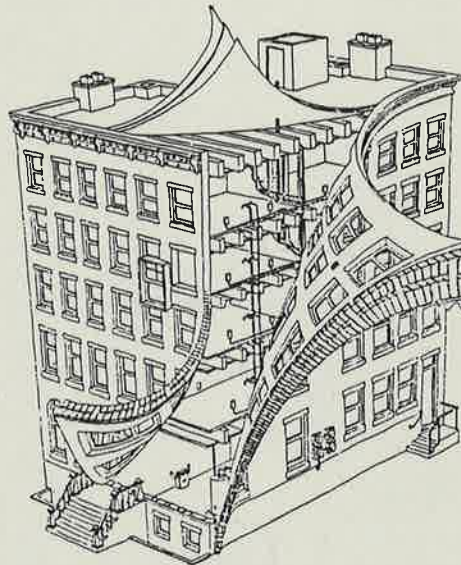
- ▲ Arrange for a free energy audit.
- ▲ Assist in determining income eligibility of tenants.
- ▲ Provide technical assistance.
- ▲ Provide a grant covering up to 50% of the cost of conservation measures.
- ▲ Assist owners in obtaining either a 35% Business Energy Tax Credit from the

Oregon Department of Energy, or a cash incentive in lieu of the Tax Credit.

- ▲ Provide information on qualifying for Energy Conservation Loans.
- ▲ Select one of our "Gold Card" contractors to complete the weatherization work.
- ▲ Inspect the completed work.

TYPICAL ENERGY CONSERVATION MEASURES

- ▲ Attic insulation
- ▲ Under-floor insulation
- ▲ Wall insulation
- ▲ Storm windows or replacement windows
- ▲ Minor repairs needed to install energy measures



THE LIST OF WEATHERIZATION INCENTIVES IS IMPRESSIVE FOR RENTAL PROPERTIES

▲ FREE ENERGY AUDITS

▲ GRANTS

Up to 50% of project costs for qualified complexes

▲ TAX CREDITS

35% Business Energy Tax Credit (BETC) taken over 5 years; or

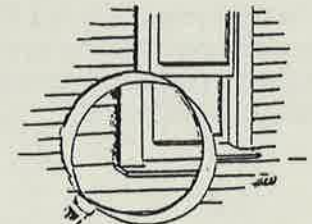
28.87% cash to you in lieu of the 5 year tax credit (NOT available for oil heated properties)

▲ LOANS

All fuels—Oregon Department of Energy's Small Scale Energy Loan Program (S.E.L.P.), fixed rate, 10 year loan

Oil—Oregon Department of Energy loan, 6 1/2%, 10 year loan

Gas and Electric—utility loans,
6 1/2% to
12 1/2%,
up to
10 years



BELOW IS AN EXAMPLE OF HOW THE INCENTIVE PROGRAM CAN WORK FOR YOU!

▲ 20 UNIT ELECTRIC OR GAS HEATED APARTMENT BUILDING

With at least 50% of units occupied by low-income tenants.

PROJECT INCLUDES:

R-38 Attic insulation

R-21 Under-floor insulation

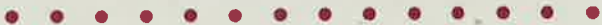
R-11 Wall insulation

EXAMPLE:

\$20,000	Project cost
-10,000	WCCAO's contribution
10,000	Owner's contribution
<u>-2,887</u>	<u>28.87% BETC pass-through</u>
\$ 7,113	Net Project Cost to Owner



(☛ NOTE: If project has less than 50% of units occupied by low-income tenants, we can still structure a financing package on a case-by-case basis. Call us for details.)



THE NEXT STEP IS YOURS!!

By combining all the available incentives, you can cut the costs of installing weatherization by at least 60%!

GIVE US A CALL TODAY!

**Joan Swanson
Energy Conservation Manager
648-6646**



**451 S. First Avenue
Suite 700
Hillsboro, OR 97123**



Printed on recycled paper. Please recycle